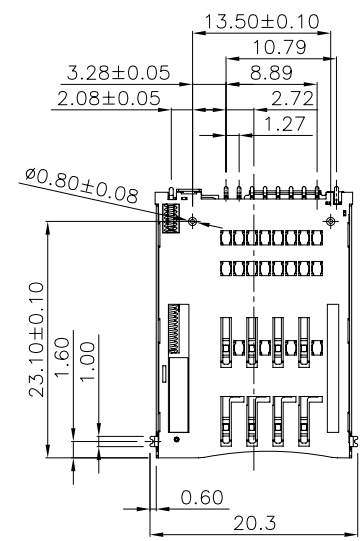
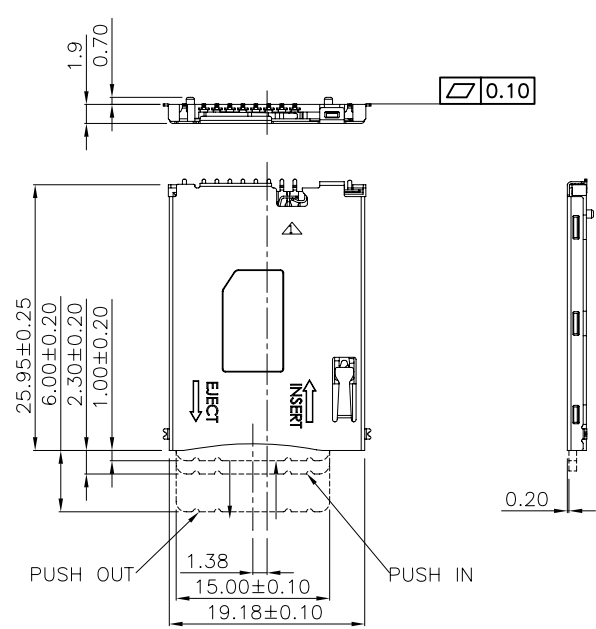


| REV. | DESCRIPTION | DATE         |
|------|-------------|--------------|
| A    | RELEASE     | Nov 01, 2011 |



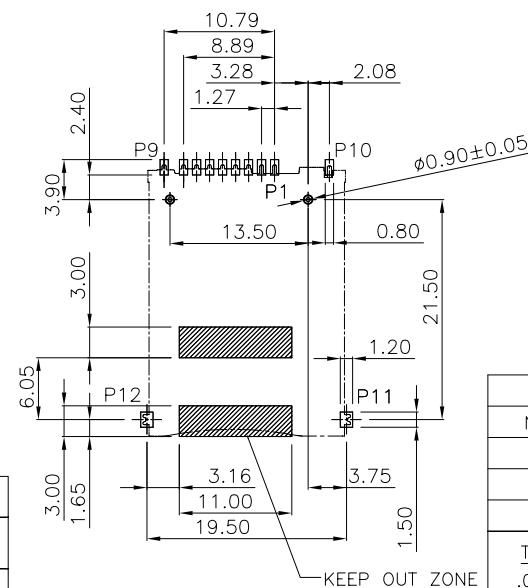
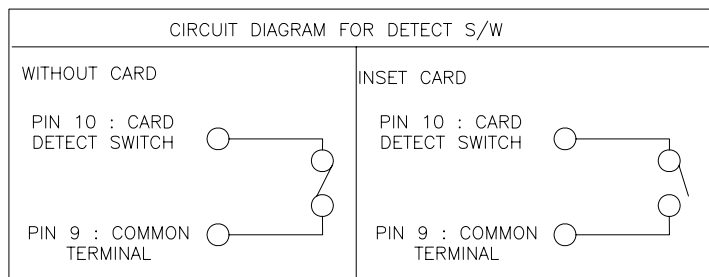
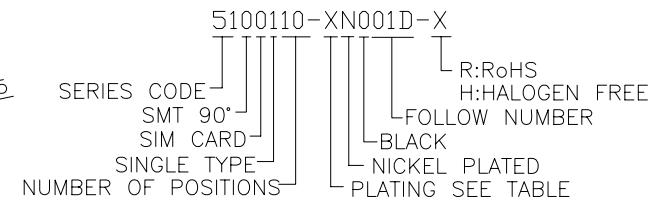
### MATERIALS

- HOUSING : THERMOPLASTIC (UL 94V-0) BLACK
- TERMINAL : COPPER ALLOY,  
PLATING : GOLD PLATED ON CONTACT AREA, TIN PLATED ON SOLDER TAILS.
- SHELL : STEEL,  
PLATING : NICKEL PLATED OVERALL.

### SPECIFICATION

- CURRENT RATING : 0.5A. MAX.
- DIELECTRIC WITHSTANDING VOLTAGE :  
500V AC R.M.S. FOR 1 MINUTE.
- INSULATION RESISTANCE : 1000MΩ MIN. AT 500V DC.
- CONTACT RESISTANCE : 100mΩ MAX.
- OPERATING TEMPERATURE : -25°C TO +85°C.

### PART NUMBER INFORMATION :



RECOMMEND PCB LAYOUT  
TOLERANCE: ±0.05  
TOP VIEW

| DESCRIPTION OF PLATING ON TERMINALS |            |     |           |
|-------------------------------------|------------|-----|-----------|
| NO.                                 | EXPLAIN    | NO. | EXPLAIN   |
| 0                                   | GOLD FLASH | 3   | GOLD 15u" |
| 1                                   | GOLD 5u"   | 4   | GOLD 20u" |
| 2                                   | GOLD 10u"  | 6   | GOLD 30u" |

| PIN ASSIGNMENTS        |                                |                        |                       |
|------------------------|--------------------------------|------------------------|-----------------------|
| CONNECTOR TERMINAL NO. | PIN NO.                        | CONNECTOR TERMINAL NO. | PIN NO.               |
| PIN 1                  | GND : PWR SIGNAL AND GND       | PIN 6                  | CLK : CLOCKING SIGNAL |
| PIN 2                  | VCC : PWR SIGNAL AND GND       | PIN 7                  | N/A                   |
| PIN 3                  | VPP : PROGRAMMING VOLTAGE      | PIN 8                  | N/A                   |
| PIN 4                  | RST : RESET SIGNAL             | PIN 9                  | COMMON TERMINAL       |
| PIN 5                  | I/O : SERIAL DATA INPUT/OUTPUT | PIN 10                 | CARD DETECT SWITCH    |
| PIN 11&12              | GND                            |                        |                       |

|  |                |                             |                               |
|--|----------------|-----------------------------|-------------------------------|
| TOLERANCE<br>.0=±0.25<br>.00=±0.15<br>.000=±0.05<br>ANG.=±3' | DRAWER<br>Yang | <br>ASTRON TECHNOLOGY CORP. |                               |
| UNITS : mm   | CHECK<br>Hony  |                             | NAME<br>SIM CARD CONNECTOR(B) |
| SCALE NONE SIZE A5   | APP'D<br>Jon   |                             | DRAW NO.<br>R5100110-XN001D-X |
| SHEET 1 OF 1   | REV. A         |                             |                               |